

List of Resources

20 Employees certified as flaggers.

The District owns and maintains vehicles that include:

- 2 Backhoes
- 4 Dump Trucks
- 1 Jet Truck
- 12 Pick-up Trucks
- 3 Service Trucks
- 1 Vactor Truck
- 3 SUVs
- 1 TV Truck

Additional equipment includes:

- 2 - 4x8 Tilt Trailers
- 2 Portable Generators (80 kW, 125 kW)
- 2 Utility Trailer
- 1 Portable Sewer Pump (1,000 GPM)
- 1 Concrete Saw
- 1 Air Compressor
- 1 Trailer Diesel Water Pump (1,000 GPM)
- 2 Landscape Trailer
- 1 Portable Fuel Trailer
- 1 Easement Machine



About the District



Key Contacts:
(253) 630-9900

Ron Speer
General Manager
Ext. 102
rspeer@sooscreek.com

Greg Hill
Operations Manager
Ext. 115
ghill@sooscreek.com

Marci Oda
Human Resources Manager
Ext. 135
moda@sooscreek.com

Karen Jester
Finance Manager
Ext. 101
kjester@sooscreek.com

Customer Service:
(253) 630-9900

24-Hour Emergency:
(253) 630-9900

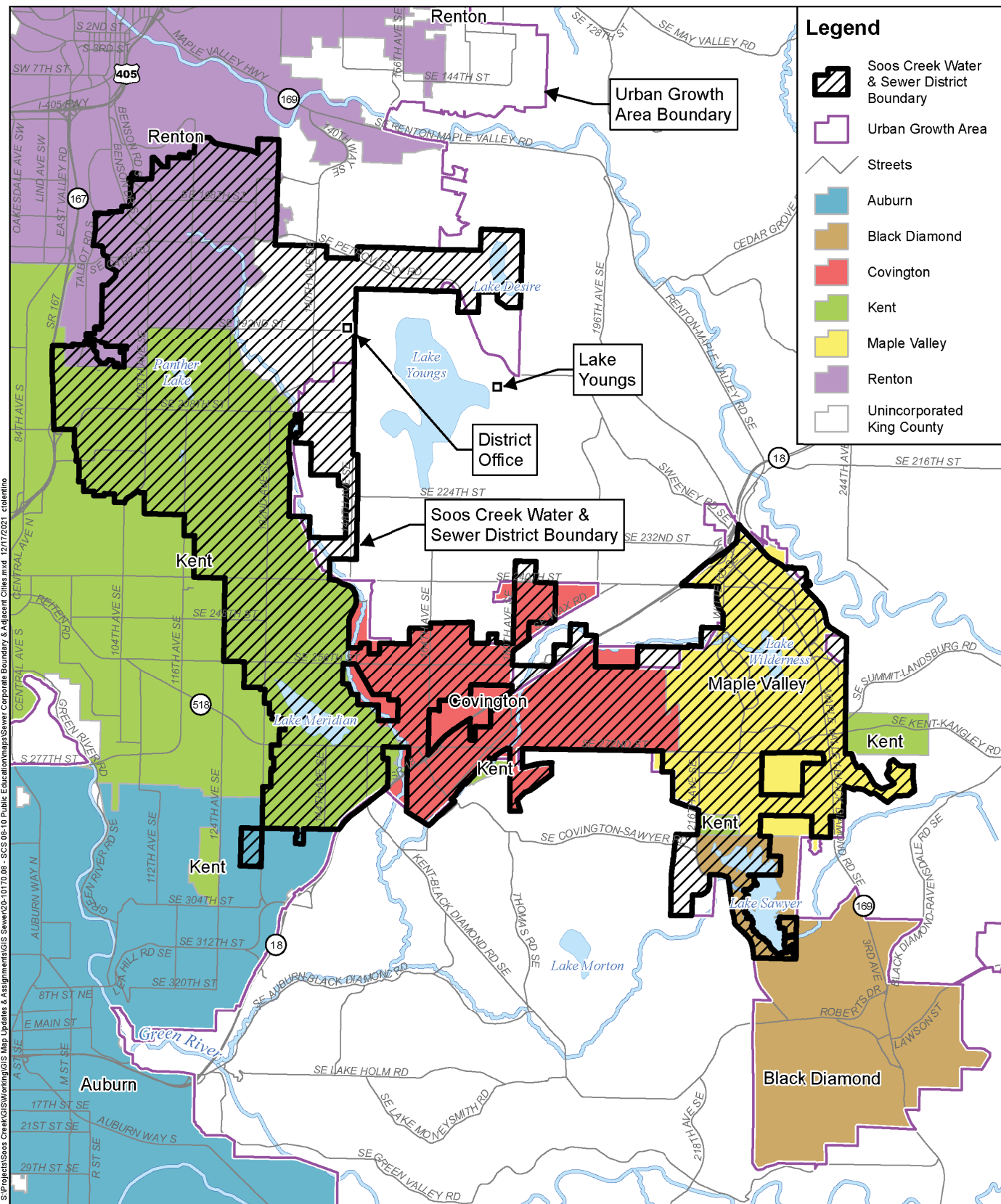
One of the largest utilities in Washington State.

Soos Creek Water & Sewer District (SCWSD) currently serves more than 114,000 customers within 35 square miles.



14616 SE 192nd Street
Renton, WA 98058-1039
(253) 630-9900

January 2022



Soos Creek Water & Sewer District (SCWSD) is one of the largest utilities in the state of Washington. SCWSD currently serves more than 114,000 people within 35 square miles.

Water Service

The existing water service area is situated within the present SCWSD boundary. The service area covers approximately 16 square miles serving more than 67,360 people. SCWSD purchases its water supply from Seattle Public Utilities (SPU) via a 60-year water supply contract that provides water to 26 utilities in the Puget Sound area. SCWSD has established a number of agreements with neighboring utility districts, cities, and King County for the provision of water services. Agreements with King County, Lake Meridian Water District and the cities of Kent and Renton establish specific water service boundaries between the District and each of these entities. These agreements rely on the ability of each jurisdiction to provide service.

Sewer Service

SCWSD's sewer service area lies generally in South King County directly east of the City of Kent, and south of the City of Renton. SCWSD extends easterly serving the cities of Auburn, Black Diamond, Covington, Kent, Maple Valley, and Renton, and unincorporated King County. SCWSD has established a number of agreements with neighboring utility districts, cities and King County Wastewater Treatment Division for provision of sewer services. The sewer service area covers approximately 35 square miles serving more than 114,000 people.

The future service areas are confined to those areas adjacent to SCWSD and within the Urban Growth Boundary but not presently within the SCWSD's boundaries nor adjacent to an existing city. The future service areas are based on boundaries and criteria established by King County, existing agreements with neighboring municipalities and adjacent purveyors, topographical limitations, existing utility boundaries, and practical limitations of service.

Water Service Area:

- Approximately 16 square miles
- Represents over 67,360 people
- Serves portions of the cities of Renton, Kent, and Unincorporated King County

Sewer Service Area:

- Approximately 35 square miles
- Represents over 114,000 people
- Serves portions of the cities of Auburn, Black Diamond, Covington, Kent, Maple Valley, Renton, and Unincorporated King County

Commissioners:

- Gary Cline
Commissioner since 2008
- Alan Eades
Commissioner since 2017
- Alice Marshall
Commissioner since 2010
- Darold Stroud
Commissioner since 2011
- Logan Wallace
Commissioner since 2022

